



Environmental Memory Interoperable Open System

Build date: 2007-02-01 | **Last check:** v0.0.1

The most update version of this document is available on line at: <http://www.sourceforge.net/projects/emios/>

Author: Cyril Faucher | Emios project, France | <http://www.sourceforge.net/projects/emios/>

Contact: emios-users@lists.sourceforge.net

Emios is provided under the terms of the EPL License

How to start with Emios

Scope of this document: This tutorial shows how to start with Emios.

Preface: The scope of Emios is the specification and the implementation of the concept of Environmental Memory via Model Driven Development technologies: EMF (Eclipse Modeling Framework).

Prerequisites:

- Emios is installed.

Your first model conforms to ISO 19100 standards:

Important: In this first release (v0.0.1), only ISO 19109 model is implemented.

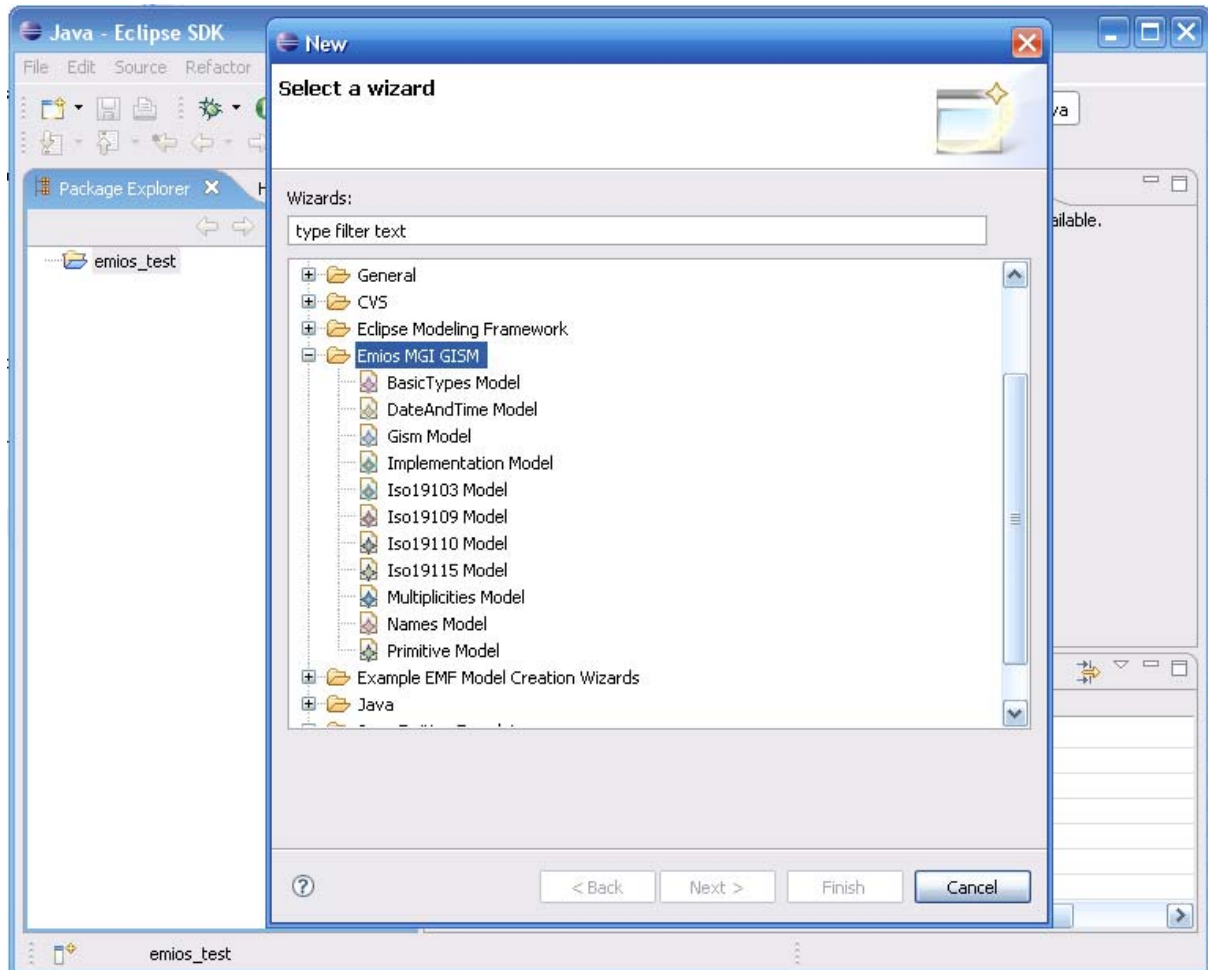
Step 1: Create a project

In the main menu of Eclipse, select > File >> New >> Project >> General (open the folder) >> Project
A dialog box appears and fill a project name.
A project appears in the view at left

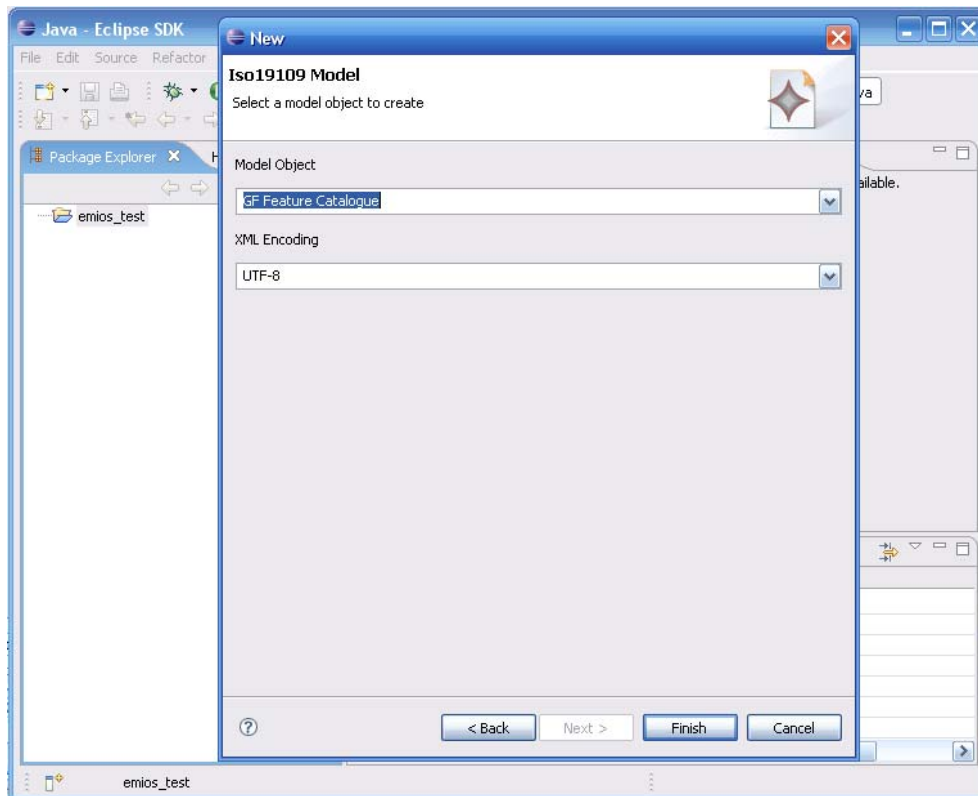
Step 2: Create a model

Select the created project at step 1

Right click on the selected project, select > New >> Other >> Emios MGI GISM (open the folder) >> Iso 19109 Model >> click on Next>



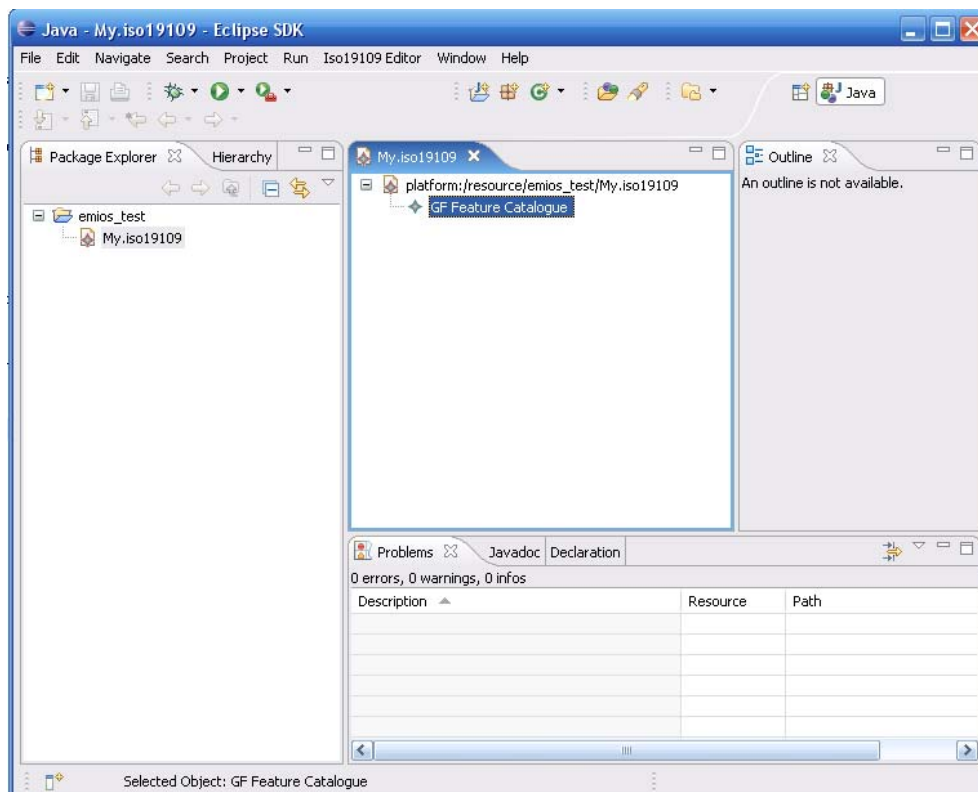
A dialog box appears. You can change the file name, do not change the extension ! >> click on Next>



Another dialog box appears. You must choose the "Model Object" = GF_FeatureCatalogue >> click on Finish

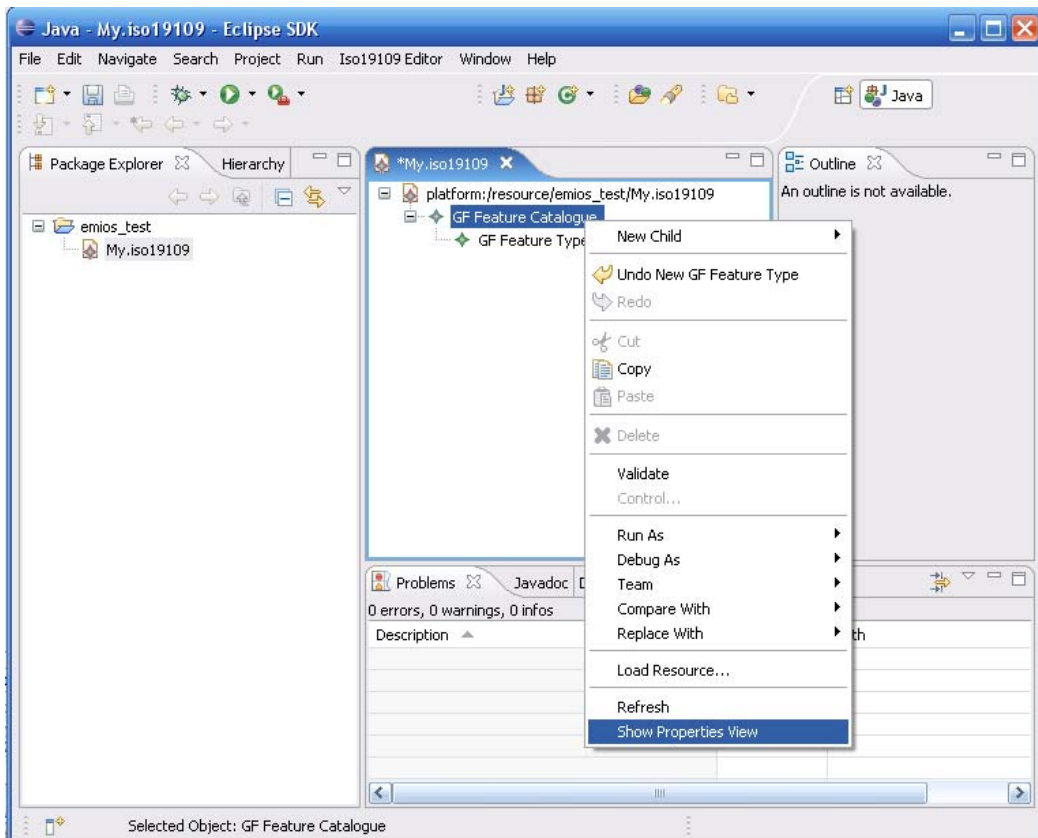
A reflexive editor (or tree editor) will open.

Step 3: Add elements to the new model
Open the root element "platform:/res..."

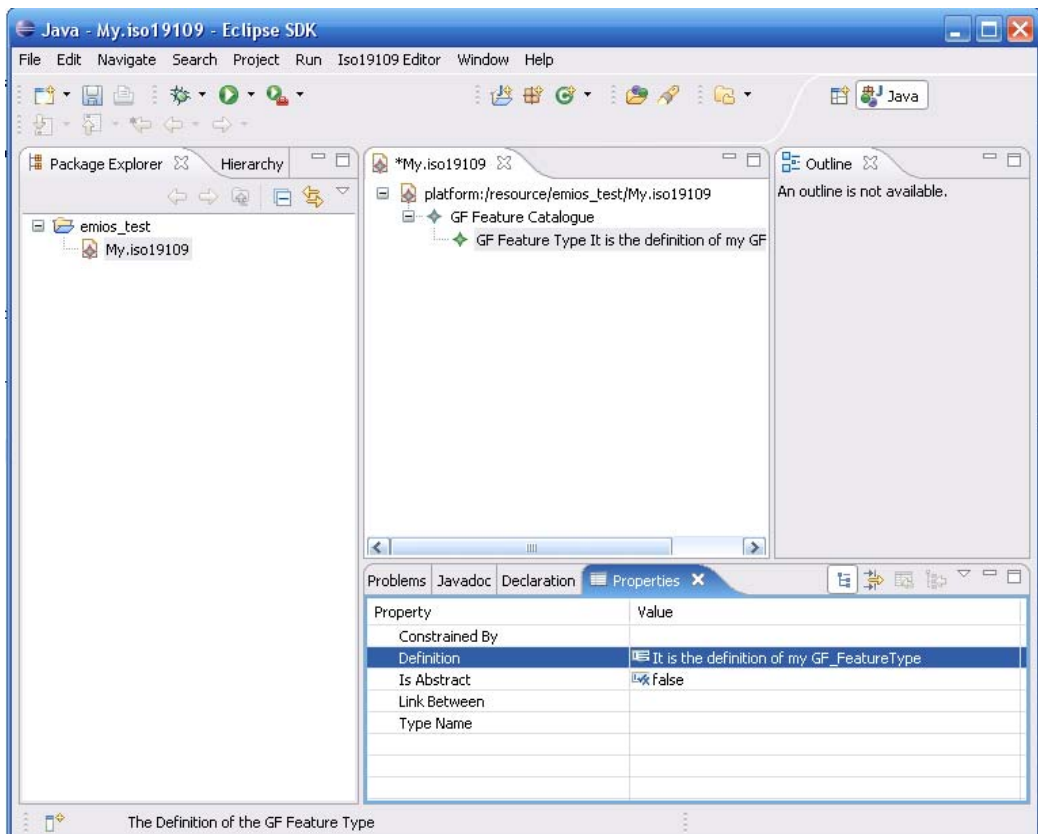


A "GF Feature Catalogue" element appears, select and right click on this one >> New Child >> Choose the element that you want create.

Re-select the "GF Feature Catalogue" element and right click on this one >> Show Properties View (at the bottom of the list).



A view with all the properties of this object appears and you can fill the parameters.



Very nice, you have created your first model with Emios !